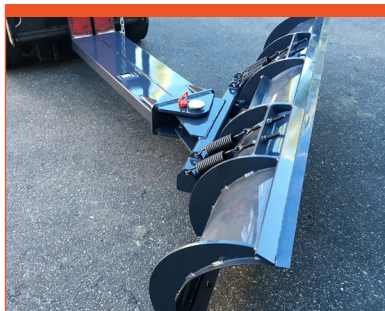




FORK MOUNT SNOW BLADE



- Spring loaded tripping feature to protect curbs and other hidden obstacles
- Easily adjustable bi-directional 40 degree angle adjustment
- Replaceable, high-strength, and abrasion resistant bolt-on cutting edge
- Large capacity blade (84" wide X 21" tall) engineered for optimum snow roll
- Large capacity fork pockets accommodate forks up to 11 1/4" wide by 2" thick
- Heavy duty construction for years of trouble free use. Total weight 650lbs

EVERY VIKING WEST FORK MOUNT SNOW BLADE COMES WITH AN INDUSTRY-LEADING 24-MONTH WARRANTY.



CALL NOW TO ORDER!

