

# HITACHI EXCAVATOR ATTACHMENTS AND GUARDING



**VIKING WEST**



**WHETHER YOU'RE DIGGING,  
LIFTING, MOVING, OR  
BUILDING, YOU PUT IN  
100%. YOUR WORK  
DEMANDS THE BEST HEAVY  
EQUIPMENT, AND OUR JOB  
IS TO DELIVER IT.**

## TABLE OF CONTENTS

PAGE <b>4</b>	<b>ABOUT US</b>
PAGE <b>10</b>	<b>MANUAL WEDGE COUPLERS</b>
PAGE <b>16</b>	<b>HYDRAULIC COUPLERS</b>
PAGE <b>20</b>	<b>HEAVY DUTY DIG BUCKETS</b>
PAGE <b>30</b>	<b>EXTRA HEAVY DUTY DIG BUCKETS</b>
PAGE <b>34</b>	<b>HEAVY DUTY CLEAN-UP BUCKETS</b>
PAGE <b>42</b>	<b>EXTRA HEAVY DUTY CLEAN-UP BUCKETS</b>
PAGE <b>46</b>	<b>HEAVY DUTY DIRECT LINK THUMBS</b>
PAGE <b>52</b>	<b>CAB GUARDING</b>
PAGE <b>56</b>	<b>EXCAVATOR CATWALKS</b>
PAGE <b>60</b>	<b>BELLY PANS</b>
PAGE <b>64</b>	<b>TRACK GUARDS</b>



# ABOUT US

## WHO WE ARE

Whether you're digging, lifting, moving, or building, you put in 100%—no matter how tough the job.

Your work demands the best heavy equipment, and our job is to deliver it. We are Viking West.

Since 2013, we have been designing and manufacturing high-performance industrial machinery, heavy equipment accessories, and service parts for customers around the world. By combining innovative design, advanced manufacturing capabilities, and top-quality materials, we ensure that every Viking West product delivers reliable performance in even the most challenging conditions.

Our approach is straightforward: work with integrity, grow with innovation, and thrive with collaboration. That's what you can count on from Viking West. That's how we deliver value by design.

## OUR TAKE ON SOCIAL RESPONSIBILITY

At Viking West, we work the way we live: caring for the people, communities and environment around us.

Our team cares deeply about family and love everything outdoors, from leisurely family picnics in the park to backcountry adventures in search of remote mountain lookouts. We also recognize our responsibility to protect these opportunities so we can share this joy with our children, our neighbours, and future generations.

The Viking West team supports organizations and causes that make meaningful contributions aligned with these values, such as BC Children's Hospital, Tour de Cure for BC Cancer, and the Vancouver Food Bank.

With this mindset, social responsibility doesn't feel like something separate. Instead, it's part of our day-to-day lives and ingrained in our values, just like a sun-filled afternoon in the park.

The best partnerships are built with integrity. Contact us to learn how we can work together to meet your industrial equipment needs.

## OUR BELIEFS

- ▶ We Believe In Maintaining Our Integrity In Everything We Do.
- ▶ We Believe In Overcoming Challenges With Open Communication.
- ▶ We Believe In Supporting Our Customers Through Thick And Thin.
- ▶ We Believe In Boosting Performance With Continuous Improvement.
- ▶ We Believe In Listening To The Needs Of Each Customer.
- ▶ We Believe In Harnessing Global Capabilities To Deliver World-Class Quality.
- ▶ We Believe In The Boundless Potential Of Engineering.

## SHAPING THE FUTURE WITH ENGINEERING

Engineering expertise sits at the core of our business.

Building on two decades of experience in the Canadian construction and forestry industries, Viking West founder and president Mike Schlender has kept us focused on producing world-class engineered products from day one. And with every new day we ask ourselves again: How can we shape a better, more productive future for our customers?

### | HERE'S HOW |

- Translating customer pain points into cost-effective engineering solutions.
- Directing our deep expertise toward making industrial machinery safer and more efficient.
- Innovating at the nexus of technological capabilities and industry developments.
- Recognizing that sometimes the smallest improvements can add up to yield massive value.

## WORLD-CLASS MANUFACTURING FOR WORLD-CLASS MACHINERY

Would you like to know about our full-service manufacturing facility?

We can tell you all about our 320,000 sq ft facility and ISO 9001:2008 certification. We can go into great detail about our capabilities, from laser and plasma plate processing, to press brake and roll forming. We can show you our equipment for manual and robotic welding, or our shot blasting and electrostatic paint facilities. We can tell you about our expert staff.

We're happy to share all of this and more, but we know that ultimately what matters most is how your machinery performs, not how it is made.

You require world-class machinery that is versatile, reliable, and cost-effective. And we have the world-class manufacturing capabilities to deliver.





## CUSTOM MANUFACTURING CAPABILITIES

Specialized machinery needs or unique production requirements? Viking West can help.

Our experienced engineering team provides custom manufacturing solutions specializing in complex engineered weldments for heavy industrial applications.

Collaborating closely with your product and supply chain experts, we can translate your detailed specifications into a customized manufacturing plan—from design right through to order fulfilment strategy.

Whether you require rapid prototyping, limited runs, or high-volume repetitive production, our manufacturing specialists and ISO 9001:2008 facility are up to the challenge.

### OUR STEEL FABRICATION AND MACHINING CAPABILITIES INCLUDE:

- Carbon and alloy steel
- Flame, plasma, and laser plate processing
- Bending, shearing, punching, and pressing
- Manual and robotic welding
- Drilling, boring, turning, milling, and grinding
- Heat treating
- E-coat, spray, and powder coating

### OUR STEEL PREPARATION AND COATING CAPABILITIES INCLUDE:

- Sand and steel shot blasting
- Alkaline wash and degreasing
- Multi-part coating systems
- Radiant heat paint curing booth
- Zinc thermal spray
- Continuous monorail crane to move parts through entire coating process



## INSPECTION AND TESTING

### OUR INSPECTION AND TESTING CAPABILITIES INCLUDE:

- Mechanical, chemical, and metallurgical testing and analysis
- 3D measurement with coordinate measuring machine (CMM)
- Magnetic particle inspection (MPI)
- Penetrant testing (PT)
- Ultrasonic testing (UT)
- Hardness testing
- Coating inspection
- Visual testing

When off-the-shelf machinery doesn't meet your needs, Viking West is ready to help with custom manufacturing. Our skilled engineering team and modern fabrication facilities can produce tailored solutions that meet the highest performance standards. Contact us today to discuss your unique requirements.



# SUPPORT



Your business requires high-performance machinery that will get the job done, every time. If your equipment breaks down or fails, productivity suffers.

At Viking West, we understand the importance of maintaining smooth operations with minimal downtime. That's why we provide expert technical assistance, speedy access to spare parts and robust product warranties.

*I think the biggest value, that unsung hero, is the build quality that Viking West has been able to produce.*

*And knock-on wood, I can't say this for any of my other suppliers, Viking West has had next to no claims over the 5 or 6 years I've been dealing with them.*

*~Alex Ell, Wajax*



## TECHNICAL ASSISTANCE

If you encounter a problem with Viking West equipment, our trained technical team is ready to help. Whether you have a technical question or require assistance with equipment repair, we'll provide the support needed to get you back up and running as quickly as possible.

### | CUSTOMER SUPPORT EMAIL |

[support@viking-west.com](mailto:support@viking-west.com)

### | CUSTOMER SUPPORT HOTLINE |

toll free 1-855-500-6607

### | HOTLINE HOURS |

Monday to Friday, 8:00 am to 8:00 pm  
Mountain Standard Time (MST)



## PARTS

Viking West products are engineered to the highest standards, and that means we only use top-quality parts. We make replacement parts readily available so you can keep your machinery performing at its best.

Our local dealers stock Viking West parts to ensure replacements are on hand when you need them. However, if you can't find the part you need locally, we are generally able to ship it within 24 hours.

### | CUSTOMER SUPPORT EMAIL |

[support@viking-west.com](mailto:support@viking-west.com)

### | CUSTOMER SUPPORT HOTLINE

toll free 1-855-500-6607

### | HOTLINE HOURS |

Monday to Friday, 8:00 am to 8:00 pm  
Mountain Standard Time (MST)



## WARRANTY

At Viking West, we stand proudly behind the quality of our products. We back this up with a limited warranty that all products manufactured by Viking West will be free from defects in materials or workmanship for a period of two (2) years, subject to the terms and conditions detailed below. OEM components and aftermarket parts may have additional limitations that are available upon request. The warranty period begins 90 days after delivery of the product to the dealer or upon the sale of the product to the end user, whichever occurs first.

If any product covered by this warranty is rejected due to a defect in workmanship or materials, or due to a failure to conform to the product design specifications, Viking West's obligation is limited to replacing the defective items with others that comply with the specifications or repairing the defective items. Viking West has sole discretion over whether to repair or replace such items.



## PRODUCT AVAILABILITY

We endeavor to stock all our standard products at our facility in Burnaby, BC, and are adding to our product line over time.

# MANUAL WEDGE COUPLERS



Viking West Manual Wedge Couplers enable you to quickly attach, detach, and share compatible attachments among your fleet to minimize downtime and maximize your productivity. Our Manual Wedge Bar Quick Couplers have a simple low-profile design that maintains your excavator's intended tip radius and delivers reliable performance.



**FIG 1** Manual Wedge Coupler



## KEY FEATURES



### MADE IN CANADA

Our Manual Wedge Coupler has been designed, developed, and assembled at our facility in Burnaby, British Columbia.



### TESTING AND STRESS ANALYSIS

Couplers are expected to handle extreme loads in the toughest conditions. We have spent countless hours testing our Couplers in extreme conditions in British Columbia to ensure that they won't let you down.



### PRODUCT SAFETY AND COMPLIANCE

Our Product Safety and Compliance engineer has completed a comprehensive risk analysis to ensure that we comply with all applicable industry standards. We have gone above and beyond wherever we can to ensure the safe operation, transportation, and servicing of our Couplers.



### ENGINEERED WELDING

Our welding engineers have thought through every detail of welding on our Couplers. Material selection, joint design, welding process, and quality testing have all been carefully chosen to ensure our welds will stand up to the extreme demands on the job.

### INDUCTION-HARDENED BUSHINGS

Viking West Manual Wedge Couplers use induction-hardened, high-strength steel for replaceable bushings to ensure long-term durability and serviceability.

### LOAD RATED LIFTING EYE

Viking West Manual Wedge Couplers are equipped with ISO 20474-1 compliant lifting eye with rated load capacity.

### ENCAPSULATED WEDGE BAR

The encapsulated wedge bar design boosts the strength of the Manual Wedge Coupler while improving safety by providing a secure pocket for wedge bar retention.

### PEACE OF MIND

Every Viking West Manual Wedge Coupler comes with an industry-leading 24-month warranty. If you need our support, we promise to have service parts in stock and qualified technicians available to get you back up and running.





# SPECIFICATIONS

The specifications for the Manual Wedge Coupler are as follows:

SERIES	SKU	LUGGING STYLE	LENGTH (mm/in)	WIDTH (mm/in)	HEIGHT (mm/in)	WEIGHT (kg/lb)	PIN DIAMETER (mm/in)
10	101550	Hitachi Wedge Lock	312/12.3	210/8.3	105/4.1	9.9/21.8	30/1.2
25	101821	Hitachi Wedge Lock	422/16.6	240/9.4	125/4.9	16.5/36.3	35/1.4
30	100394	Hitachi Wedge Lock	422/16.6	240/9.4	125/4.9	16.5/36.3	40/1.6
50	100395	Hitachi Wedge Lock	500/19.7	276/10.9	153/6.0	24/52.8	45/1.8

# SPECIFICATIONS (continued)



The specifications for the Manual Wedge Coupler continued:

SERIES	SKU	LUGGING STYLE	LENGTH (mm/in)	WIDTH (mm/in)	HEIGHT (mm/in)	WEIGHT (kg/lb)	PIN DIAMETER (mm/in)
50	101461	Hitachi Wedge Lock	500/19.7	276/10.9	153/6.0	24/52.8	45/1.8
80	100040	WBM Wedge Lock	549/21.6	330/13.0	227/8.9	34.7/76.3	50/2.0
120	102243	WBM Wedge Lock	1095/43.1	402/15.8	315/12.4	129.0/284	65/2.6
150	101814	WBM Wedge Lock	829/32.6	473/18.6	326/12.8	97.6/283.8	80/3.2
200	101985	WBM Wedge Lock	1136/44.7	533/21.0	345/13.6	176.8/389.0	80/3.2
250	101987	WBM Wedge Lock	1243/48.9	623/24.5	401/15.8	258.0/567.6	90/3.5
300	101989	WBM Wedge Lock	1336/52.6	634/25.0	430/16.9	292/642.4	100/4.0
400	102185	WBM Wedge Lock	1454/57.2	728/28.7	472/18.6	388/853.6	110/4.3



# HYDRAULIC COUPLERS



Viking West Hydraulic Wedge Couplers enable you to quickly attach, detach, and share compatible attachments among your fleet from the comfort of your cab. You will appreciate our unique design features that ensure safe, reliable, and flexible operation to minimize downtime and maximize your productivity. You'll have peace of mind with easy conversion to manual operation in the event of hydraulic failure.



**FIG 2** Hydraulic Coupler



## KEY FEATURES



### MADE IN CANADA

Our Hydraulic Wedge Coupler has been designed, developed, and assembled at our facility in Burnaby, British Columbia.



### TESTING AND STRESS ANALYSIS

Couplers are expected to handle extreme loads in the toughest conditions. We have spent countless hours testing our Couplers in extreme conditions in British Columbia to ensure that they won't let you down.



### PRODUCT SAFETY AND COMPLIANCE

Our Product Safety and Compliance engineer has completed a comprehensive risk analysis to ensure that we comply with all applicable industry standards. We have gone above and beyond wherever we can to ensure the safe operation, transportation, and servicing of our Couplers.



### ENGINEERED WELDING

Our welding engineers have thought through every detail of welding on our Couplers. Material selection, joint design, welding process, and quality testing have all been carefully chosen to ensure our welds will stand up to the extreme demands on the job.

### ISO 13031:2016 COMPLIANT

Viking West Hydraulic Wedge Quick Couplers comply with the latest requirements of ISO13031 International safety standards for earth-moving machinery quick couplers.

### EASY OPERATION FROM CAB

Rocker switch with momentary actuator integrated into operator's console for safe and convenient activation of primary wedge lock and secondary pin lock from the cab.

### FAIL SAFE DESIGN

Primary locking cylinder and secondary pin lock have a fail safe design to prevent unintended decoupling of your attachment in the event of system pressure loss.

### VISUAL INDICATOR FOR LOCK ENGAGEMENT

Safe lock position is visible from the cab so the operator can work confidently knowing his attachment is secure.

### EASY CONVERSION TO MANUAL OPERATION

Coupler can be easily converted from hydraulic to manual operation in the event of hydraulic system malfunction.

### INDUCTION-HARDENED BUSHINGS

Viking West Hydraulic Wedge Couplers use induction-hardened, high-strength steel for replaceable bushings to ensure long-term durability and serviceability.

### LOAD RATED LIFTING EYE

Viking West Manual Wedge Couplers are equipped with ISO 20474-1 compliant lifting eye with rated load capacity.

### PEACE OF MIND

Every Viking West Hydraulic Wedge Coupler comes with an industry-leading 24-month warranty. If you need our support, we promise to have service parts in stock and qualified technicians available to get you back up and running.



# SPECIFICATIONS

The specifications for the Hydraulic Wedge Coupler are as follows:

SERIES	SKU	LUGGING STYLE	LENGTH (mm/in)	WIDTH (mm/in)	HEIGHT (mm/in)	WEIGHT (kg/lb)	PIN DIAMETER (mm/in)
120	102026	WBM Wedge Lock	1092/43.0	403/15.9	315/12.4	159/350	65/2.6
200	101354	WBM Wedge Lock	1136/44.7	520/20.5	345/13.6	200/440	80/3.1
250	101761	WBM Wedge Lock	1243/48.9	623/24.5	401/15.8	287/631	90/3.5
300	101880	WBM Wedge Lock	1336/52.6	634/25.0	430/16.9	321/706	100/3.9



# HEAVY DUTY DIG BUCKETS



## KEY FEATURES

You need a versatile dig bucket that can deliver dependable performance in varied work environments. Viking West Heavy Duty Dig Buckets are designed to perform in abrasive ground conditions where high bucket breakout forces are required.



**FIG 3** Heavy Duty Dig Bucket



### TESTING AND STRESS ANALYSIS

Heavy Duty Dig Buckets are expected to handle extreme loads in the toughest conditions. We have spent countless hours testing our Dig Buckets in extreme conditions in British Columbia to ensure that they won't let you down.



### PRODUCT SAFETY AND COMPLIANCE

Our Product Safety and Compliance engineer has completed a comprehensive risk analysis to ensure that we comply with all applicable industry standards. We have gone above and beyond wherever we can to ensure the safe operation, transportation, and servicing of our Dig Buckets.



### ENGINEERED WELDING

Our welding engineers have thought through every detail of welding on our Dig Buckets. Material selection, joint design, welding process, and quality testing have all been carefully chosen to ensure our welds will stand up to the extreme demands on the job.

### HIGH-STRENGTH ABRASION-RESISTANT STEEL

Viking West Heavy Duty Dig Buckets are made with AR400 grade high-tensile, abrasion-resistant steel for wear bars, cheek plates, leading-edge side plates, lips, and lugging.

### TEETH AND ADAPTER OPTIONS

Our Heavy Duty Dig Buckets are available with Cat or Esco teeth and adapters for exceptional digging performance and reliability. Cat RVJ and Esco Ultralock models are available as an optional upgrade for convenient hammerless tooth replacement.

### MAXIMUM PRODUCTIVITY

A compound curved shell design provides maximum unobstructed volume and optimal self-cleaning performance.

### OPTIONAL LUGGING

Our Heavy Duty Dig Buckets are available with wedge lock and pin-on style lugging. Either way, you can count on your bucket to connect with ease for many years of trouble-free use.

### PEACE OF MIND

Every Viking West Heavy Duty Dig Bucket comes with an industry-leading 24-month warranty. If you need our support, we promise to have service parts in stock and qualified technicians available to get you back up and running.



# SPECIFICATIONS

The specifications for the Heavy Duty Dig Bucket are as follows:

## WEDGE LOCK LUGGING

SERIES	WIDTH (in)	SKU	WEIGHT (kg/lb)	CAPACITY (m3/yd3)	LUGGING STYLE	TOOTH SERIES	TOOTH CLASS	TOOTH STYLE	# OF TEETH
10	12"	101886	64/141	0.02/0.03	Hitachi Wedge Lock	Cat J	J200	Standard Long	3
10	18"	101555	64/141	0.04/0.05	Hitachi Wedge Lock	Cat J	J200	Standard Long	4
25/30	12"	100226	67/148	0.05/0.07	Hitachi Wedge Lock	Cat J	J200	Standard Long	3
25/30	18"	100229	85/186	0.08/0.10	Hitachi Wedge Lock	Cat J	J200	Standard Long	4
25/30	24"	100231	98/216	0.11/0.14	Hitachi Wedge Lock	Cat J	J200	Standard Long	4
50	12"	100237	97/213	0.08/0.10	Hitachi Wedge Lock	Cat J	J200	Standard Long	3
50	18"	100240	118/260	0.12/0.16	Hitachi Wedge Lock	Cat J	J200	Standard Long	4
50	24"	100242	137/302	0.17.0.23	Hitachi Wedge Lock	Cat J	J200	Standard Long	4

| TOOTH SERIES, CLASS AND STYLE ARE STANDARD STOCKING CONFIGURATION. ALTERNATIVES ARE AVAILABLE UPON REQUEST. |



# SPECIFICATIONS (continued)

The specifications for the Heavy Duty Dig Bucket continued:

## WEDGE LOCK LUGGING



SERIES	WIDTH (in)	SKU	WEIGHT (kg/lb)	CAPACITY (m3/yd3)	LUGGING STYLE	TOOTH SERIES	TOOTH CLASS	TOOTH STYLE	# OF TEETH
60	12"	100480	100/220	0.08/0.10	Hitachi Wedge Lock	Cat J	J200	Standard Long	3
60	18"	100483	120/265	0.12/0.16	Hitachi Wedge Lock	Cat J	J200	Standard Long	4
60	24"	100485	140/307	0.17/0.23	Hitachi Wedge Lock	Cat J	J200	Standard Long	4
80	18"	100249	232/511	0.21/0.27	WBM Wedge Lock	Cat J	J225	Standard Long	4
80	24"	100053	266/586	0.29/0.38	WBM Wedge Lock	Cat J	J225	Standard Long	4
120	24"	101848	429/944	0.30/0.39	WBM Wedge Lock	Cat J	J300	Standard Long	4
120	30"	100053	492/1083	0.40/0.53	WBM Wedge Lock	Cat J	J300	Standard Long	4
150	36"	101767	637/1401	0.64/0.83	WBM Wedge Lock	Cat J	J350	Standard Long	4
200	27"	101830	633/1393	0.48/0.63	WBM Wedge Lock	Cat J	J350	Standard Long	4
200	36"	100200	742/1631	0.80/1.0	WBM Wedge Lock	Cat J	J350	Standard Long	4
200	36"	102365	752/1654	0.80/1.0	WBM Wedge Lock	Cat J	J350	Standard Long	5
200	42"	102357	841/1850	0.96/1.26	WBM Wedge Lock	Cat J	J350	Standard Long	4
200	42"	102367	851/1872	0.96/1.26	WBM Wedge Lock	Cat J	J350	Standard Long	5

TOOTH SERIES, CLASS AND STYLE ARE STANDARD STOCKING CONFIGURATION. ALTERNATIVES ARE AVAILABLE UPON REQUEST.

# SPECIFICATIONS (continued)

The specifications for the Heavy Duty Dig Bucket continued:

## WEDGE LOCK LUGGING



SERIES	WIDTH (in)	SKU	WEIGHT (kg/lb)	CAPACITY (m3/yd3)	LUGGING STYLE	TOOTH SERIES	TOOTH CLASS	TOOTH STYLE	# OF TEETH
250	36"	101273	956/2103	0.91/1.19	WBM Wedge Lock	Cat J	J400	Standard Long	4
250	42"	101296	1007/2215	1.03/1.35	WBM Wedge Lock	Cat J	J400	Standard Long	4
250	42"	102187	1033/2273	1.03/1.35	WBM Wedge Lock	Cat J	J400	Standard Long	5
250	48"	101240	1084/2385	1.23/1.61	WBM Wedge Lock	Cat J	J400	Standard Long	4
250	48"	102189	1110/2442	1.23/1.61	WBM Wedge Lock	Cat J	J400	Standard Long	5
300	42"	101484	1413/3109	1.25/1.64	WBM Wedge Lock	Cat J	J450	Standard Long	4
300	42"	102180	1451/3192	1.25/1.64	WBM Wedge Lock	Cat J	J450	Standard Long	5
300	48"	101515	1478/3252	1.43/1.87	WBM Wedge Lock	Cat J	J450	Standard Long	4
300	48"	102182	1515/3333	1.43/1.87	WBM Wedge Lock	Cat J	J450	Standard Long	5
400	48"	101599	2021/4446	1.74/2.27	WBM Wedge Lock	Cat J	J450	Standard Long	4
400	48"	102391	2058/4528	1.74/2.27	WBM Wedge Lock	Cat J	J450	Standard Long	5
400	54"	101678	2140/4708	2.0/2.61	WBM Wedge Lock	Cat J	J450	Standard Long	4
400	54"	102388	2185/4807	2.0/2.61	WBM Wedge Lock	Cat J	J450	Standard Long	5

TOOTH SERIES, CLASS AND STYLE ARE STANDARD STOCKING CONFIGURATION. ALTERNATIVES ARE AVAILABLE UPON REQUEST.



# SPECIFICATIONS (continued)



The specifications for the Heavy Duty Dig Bucket continued:

## PIN-ON LUGGING

SERIES	WIDTH (in)	SKU	WEIGHT (kg/lb)	CAPACITY (m3/yd3)	LUGGING STYLE	TOOTH SERIES	TOOTH CLASS	TOOTH STYLE	# OF TEETH
80	24"	102490	309/680	0.29/0.38	Hitachi Pin-on	Esco Ultralok	U20	Spade	5
120	36"	102491	598/1316	0.48/0.62	Hitachi Pin-on	Esco Ultralok	U30	Spade	6
150	42"	102688	743/1635	0.75/0.98	Hitachi Pin-on	Esco Ultralok	U35	Spade	6
200	36"	102332	782/1720	0.80/1.0	Hitachi Pin-on	Esco Ultralok	U35	Spade	5
200	48"	102492	1044/2297	1.07/1.40	Hitachi Pin-on	Esco Ultralok	U35	Spade	6
250	42"	101308	954/2099	1.03/1.35	Hitachi Pin-on	Esco Ultralok	U40	Spade	6
250	48"	101310	1261/2774	1.23/1.61	Hitachi Pin-on	Esco Ultralok	U40	Spade	6
250	54"	102493	1373/3021	1.38/1.81	Hitachi Pin-on	Esco Ultralok	U40	Spade	7
300	42"	101517	1632/3590	1.25/1.64	Hitachi Pin-on	Esco Ultralok	U45	Spade	5
300	48"	101543	1647/3631	1.43/1.87	Hitachi Pin-on	Esco Ultralok	U45	Spade	6
300	54"	102432	1780/3916	1.61/2.11	Hitachi Pin-on	Esco Ultralok	U45	Spade	6
400	48"	102427	1960/4312	1.74/2.27	Hitachi Pin-on	Esco Ultralok	U45	Spade	6
400	54"	102442	2359/5190	2.0/2.61	Hitachi Pin-on	Esco Ultralok	U45	Spade	6

| TOOTH SERIES, CLASS AND STYLE ARE STANDARD STOCKING CONFIGURATION. ALTERNATIVES ARE AVAILABLE UPON REQUEST. |

# EXTRA HEAVY DUTY DIG BUCKETS



## KEY FEATURES

Viking West Extra Heavy Duty Dig Buckets are designed and purpose-built for high-abrasion conditions. With 30% more high-strength, abrasion-resistant steel at all critical wear points and extensive application of hard surfacing weld overlay, and upsized bucket teeth, these buckets are ready to work.



**FIG 4** Extra Heavy Duty Dig Bucket

**2** YEAR WARRANTY



### TESTING AND STRESS ANALYSIS

Extra Heavy Duty Dig Buckets are expected to handle extreme loads in high-abrasion conditions. We have spent countless hours testing our Extra Heavy Duty Dig Buckets in extreme conditions in British Columbia to ensure that they won't let you down.



### PRODUCT SAFETY AND COMPLIANCE

Our Product Safety and Compliance engineer has completed a comprehensive risk analysis to ensure that we comply with all applicable industry standards. We have gone above and beyond wherever we can to ensure the safe operation, transportation, and servicing of our Dig Buckets.



### ENGINEERED WELDING

Our welding engineers have thought through every detail of welding on our Extra Heavy Duty Dig Buckets. Material selection, joint design, welding process, and quality testing have all been carefully chosen to ensure our welds will stand up to the extreme demands on the job.

### HIGH-STRENGTH ABRASION-RESISTANT STEEL

Viking West Extra Heavy Duty Dig Buckets are made with AR400 grade high-tensile, abrasion-resistant steel for wear bars, cheek plates, leading-edge side plates, lips, and lugging. Compared to our Heavy Duty Dig Buckets, wear plates have 30% more high-strength steel for improved durability and service life.

### TEETH AND ADAPTER OPTIONS

Our Extra Heavy Duty Dig Buckets are available with Cat or Esco teeth and adapters for exceptional digging performance and reliability. Cat RVJ and Esco Ultralock models are available as an optional upgrade for convenient hammerless tooth replacement. Regardless of brand, bucket tooth class has been upsized compared to our Heavy Duty Dig Buckets.

### MAXIMUM PRODUCTIVITY

A compound curved shell design provides maximum unobstructed volume and optimal self-cleaning performance.

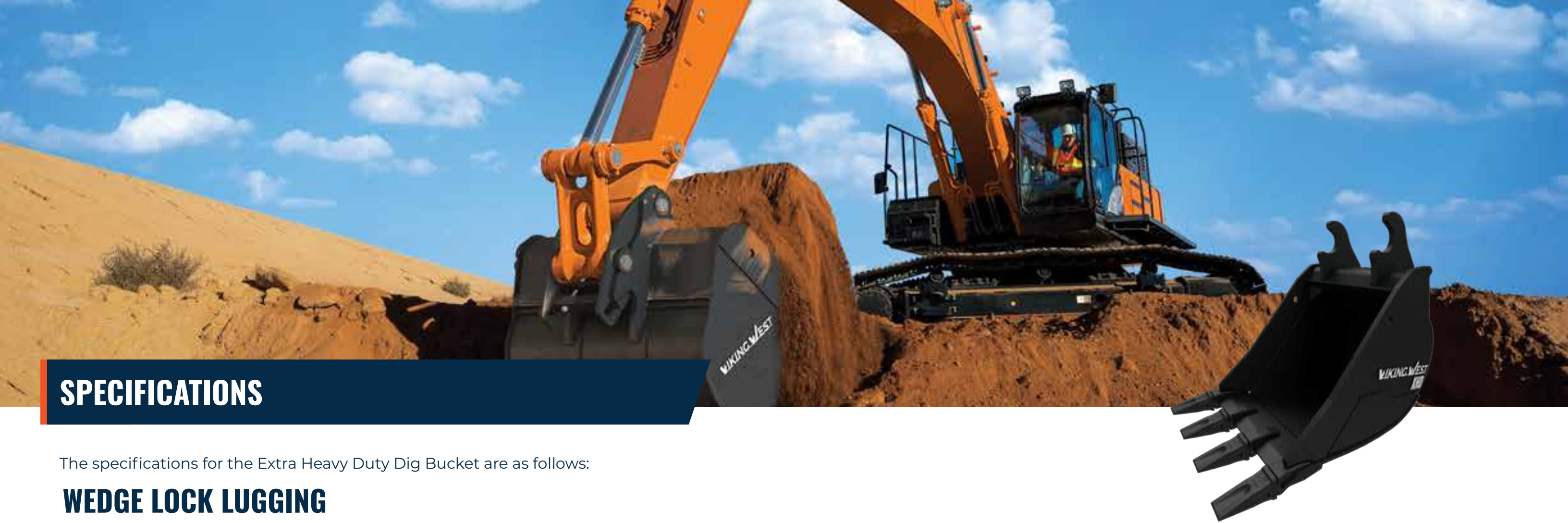
### OPTIONAL LUGGING

Our Extra Heavy Duty Dig Buckets are available with wedge lock and pin-on style lugging. Either way, you can count on your bucket to connect with ease for many years of trouble-free use.

### PEACE OF MIND

Every Viking West Extra Heavy Duty Dig Bucket comes with an industry-leading 24-month warranty. If you need our support, we promise to have service parts in stock and qualified technicians available to get you back up and running.





# SPECIFICATIONS

The specifications for the Extra Heavy Duty Dig Bucket are as follows:

## WEDGE LOCK LUGGING

SERIES	WIDTH (in)	SKU	WEIGHT (kg/lb)	CAPACITY (m3/yd3)	LUGGING STYLE	TOOTH SERIES	TOOTH CLASS	TOOTH STYLE	# OF TEETH
200	36"	101441	960	0.80/1.0	WBM Wedge Lock	Cat J	J400	Standard Long	4
200	42"	102317	1040	0.96/1.26	WBM Wedge Lock	Cat J	J400	Standard Long	4
250	42"	101451	1404	1.03/1.35	WBM Wedge Lock	Cat J	J450	Standard Long	4
250	48"	102400	1509	1.23/1.61	WBM Wedge Lock	Cat J	J450	Standard Long	4
300	42"	102402	1732	1.25/1.64	WBM Wedge Lock	Cat J	J550	Standard Long	4
300	48"	101701	1826	1.43/1.87	WBM Wedge Lock	Cat J	J550	Standard Long	4

| TOOTH SERIES, CLASS AND STYLE ARE STANDARD STOCKING CONFIGURATION. ALTERNATIVES ARE AVAILABLE UPON REQUEST. |

# HEAVY DUTY CLEAN-UP BUCKETS



Whatever your industry, you will appreciate the versatility of Viking West’s Heavy Duty Clean-up Buckets. Our Heavy Duty Clean-up Buckets are designed to maximize the productivity of your machine, whether that be by expertly grading or finishing your job site or moving large volumes of loose or bulky material.



**FIG 5** Heavy Duty Clean-up Bucket



## KEY FEATURES



### TESTING AND STRESS ANALYSIS

Heavy Duty Clean-up Buckets are expected to handle extreme loads in the toughest conditions. We have spent countless hours testing our Clean-up Buckets in extreme conditions in British Columbia to ensure that they won't let you down.



### PRODUCT SAFETY AND COMPLIANCE

Our Product Safety and Compliance engineer has completed a comprehensive risk analysis to ensure that we comply with all applicable industry standards. We have gone above and beyond wherever we can to ensure the safe operation, transportation, and servicing of our Clean-up Buckets.



### ENGINEERED WELDING

Our welding engineers have thought through every detail of welding on our Clean-up Buckets. Material selection, joint design, welding process, and quality testing have all been carefully chosen to ensure our welds will stand up to the extreme demands on the job.

### HIGH-STRENGTH ABRASION-RESISTANT STEEL

Viking West Heavy Duty Clean-up Buckets are made with AR400 grade high-tensile, abrasion-resistant steel for cutting edges, wear bars, cheek plates, leading-edge side plates, lips, and lugging.

### GENUINE BLACK CAT BOLT-ON CUTTING EDGE

Our Heavy Duty Clean-up Buckets feature a reversible and replaceable cutting edge with corrosion-resistant plow bolts and stover nuts. Optional serrated cutting edges are available for better performance in frozen ground conditions.

### MAXIMUM PRODUCTIVITY

A compound curved shell design provides maximum unobstructed volume and optimal self-cleaning performance.

### OPTIONAL LUGGING

Our Heavy Duty Clean-up Buckets are available with wedge lock and pin-on style lugging. Either way, you can count on your bucket to connect with ease for many years of trouble-free use.

### PEACE OF MIND

Every Viking West Heavy Duty Clean-up Bucket comes with an industry-leading 24-month warranty. If you need our support, we promise to have service parts in stock and qualified technicians available to get you back up and running.





# SPECIFICATIONS

The specifications for the Heavy Duty Clean-up Bucket are as follows:

## WEDGE LOCK LUGGING

SERIES	WIDTH (in)	SKU	WEIGHT (kg/lb)	CAPACITY (m3/yd3)	LUGGING STYLE	CUTTING EDGE	CUTTING EDGE THICKNESS (mm/in)
10	24"	101659	72.1/144.2	0.05/0.07	Hitachi Wedge Lock	1pc Double Bevel Flat	16/0.63
10	30"	101891	86.6/190.4	0.07/0.09	Hitachi Wedge Lock	1pc Double Bevel Flat	16/0.63
25/30	30"	100233	123.0/270.6	0.14/0.18	Hitachi Wedge Lock	1pc Double Bevel Flat	16/0.63
25/30	36"	100235	141.5/311.3	0.16/0.21	Hitachi Wedge Lock	1pc Double Bevel Flat	16/0.63
50	36"	100244	175.9/387.0	0.26/0.34	Hitachi Wedge Lock	1pc Double Bevel Flat	16/0.63
50	42"	100246	204.9/450.8	0.35/0.46	Hitachi Wedge Lock	1pc Double Bevel Flat	16/0.63

| SERRATED CUTTING EDGES AVAILABLE UPON REQUEST. |

SPECIFICATIONS (continued)



The specifications for the Heavy Duty Clean-up Bucket continued:

WEDGE LOCK LUGGING

SERIES	WIDTH (in)	SKU	WEIGHT (kg/lb)	CAPACITY (m3/yd3)	LUGGING STYLE	CUTTING EDGE	CUTTING EDGE THICKNESS (mm/in)
60	36"	100487	175.9/387.0	0.26/0.34	Hitachi Wedge Lock	1pc Double Bevel Flat	16/0.63
60	42"	100489	204.9/450.8	0.35/0.46	Hitachi Wedge Lock	1pc Double Bevel Flat	16/0.63
80	42"	100253	362.0/796.4	0.58/0.76	Hitachi Wedge Lock	1pc Double Bevel Flat	20/0.79
80	48"	100255	397.0/873.4	0.67/0.88	Hitachi Wedge Lock	1pc Double Bevel Flat	20/0.79
120	54"	100056	730.0/1606	0.85/1.11	Hitachi Wedge Lock	3pc Double Bevel Flat	25/1.0
120	60"	100362	741.3/1631	1.04/1.36	Hitachi Wedge Lock	3pc Double Bevel Flat	25/1.0
150	60"	101840	931.2/1862	1.24/1.62	Hitachi Wedge Lock	3pc Double Bevel Flat	25/1.0
200	60"	100203	1052/2314	1.40/1.83	Hitachi Wedge Lock	3pc Double Bevel Flat	25/1.0
250	66"	101275	1344/2957	1.85/2.43	Hitachi Wedge Lock	3pc Double Bevel Flat	25/1.0
300	72"	101512	1845/4059	2.38/3.11	Hitachi Wedge Lock	3pc Double Bevel Flat	25/1.0
400	84"	101680	2816/6195	3.27/4.27	Hitachi Wedge Lock	3pc Double Bevel Flat	30/1.2

| SERRATED CUTTING EDGES AVAILABLE UPON REQUEST. |



# SPECIFICATIONS (continued)



The specifications for the Heavy Duty Clean-up Bucket continued:

## PIN-ON LUGGING

SERIES	WIDTH (in)	SKU	WEIGHT (kg/lb)	CAPACITY (m3/yd3)	LUGGING STYLE	CUTTING EDGE	CUTTING EDGE THICKNESS (mm/in)
80	42"	101220	362.0/796.4	0.58/0.76	Hitachi Pin-on	1pc Double Bevel Flat	20/0.79
80	48"	101222	397.0/873.4	0.67/0.88	Hitachi Pin-on	1pc Double Bevel Flat	20/0.79
120	54"	100875	730.0/1606	0.85/1.11	Hitachi Pin-on	3pc Double Bevel Flat	25/1.0
120	60"	100877	741.3/1631	1.04/1.36	Hitachi Pin-on	3pc Double Bevel Flat	25/1.0
150	60"	102687	931.2/1862	1.24/1.62	Hitachi Pin-on	3pc Double Bevel Flat	25/1.0
200	60"	102336	1052/2314	1.40/1.83	Hitachi Pin-on	3pc Double Bevel Flat	25/1.0
250	66"	101312	1344/2957	1.85/2.43	Hitachi Pin-on	3pc Double Bevel Flat	25/1.0
300	72"	101546	1845/4059	2.38/3.11	Hitachi Pin-on	3pc Double Bevel Flat	25/1.0
400	84"	102429	2816/6195	3.27/4.27	Hitachi Pin-on	3pc Double Bevel Flat	30/1.2

| SERRATED CUTTING EDGES AVAILABLE UPON REQUEST. |

# EXTRA HEAVY DUTY CLEAN-UP BUCKETS



Whatever your industry, you will appreciate the versatility of Viking West's Heavy Duty Clean-up Buckets. Our Heavy Duty Clean-up Buckets are designed to maximize the productivity of your machine, whether that be by expertly grading or finishing your job site or moving large volumes of loose or bulky material.



**FIG 6** Extra Heavy Duty Clean-up Bucket



## KEY FEATURES



### TESTING AND STRESS ANALYSIS

Extra Heavy Duty Clean-up Buckets are expected to handle extreme loads in the toughest conditions. We have spent countless hours testing our Extra Heavy Duty Clean-up Buckets in extreme conditions in British Columbia to ensure that they won't let you down.



### PRODUCT SAFETY AND COMPLIANCE

Our Product Safety and Compliance engineer has completed a comprehensive risk analysis to ensure that we comply with all applicable industry standards. We have gone above and beyond wherever we can to ensure the safe operation, transportation, and servicing of our Clean-up Buckets.



### ENGINEERED WELDING

Our welding engineers have thought through every detail of welding on our Extra Heavy Duty Clean-up Buckets. Material selection, joint design, welding process, and quality testing have all been carefully chosen to ensure our welds will stand up to the extreme demands on the job.

### HIGH-STRENGTH ABRASION-RESISTANT STEEL

Viking West Extra Heavy Duty Clean-up Buckets are made with AR400 grade high-tensile, abrasion-resistant steel for cutting edges, wear bars, cheek plates, leading-edge side plates, lips, and lugging. Compared to our Heavy Duty Clean-up Buckets, wear plates have 30% more high-strength steel for improved durability and service life.

### GENUINE BLACK CAT BOLT-ON CUTTING EDGE

Our Extra Heavy Duty Clean-up Buckets feature a reversible and replaceable cutting edge with corrosion-resistant plow bolts and stover nuts. Optional serrated cutting edges are available for better performance in frozen ground conditions.

### MAXIMUM PRODUCTIVITY

A compound curved shell design provides maximum unobstructed volume and optimal self-cleaning performance.

### OPTIONAL LUGGING

Our Extra Heavy Duty Clean-up Buckets are available with wedge lock and pin-on style lugging. Either way, you can count on your bucket to connect with ease for many years of trouble-free use.

### PEACE OF MIND

Every Viking West Extra Heavy Duty Clean-up Bucket comes with an industry-leading 24-month warranty. If you need our support, we promise to have service parts in stock and qualified technicians available to get you back up and running.





# SPECIFICATIONS

The specifications for the Extra Heavy Duty Clean-up Bucket are as follows:

SERIES	WIDTH (in)	SKU	WEIGHT (kg/lb)	CAPACITY (m3/yd3)	LUGGING STYLE	CUTTING EDGE	CUTTING EDGE THICKNESS (mm/in)
200	60"	101457	1262/2776	1.40/1.83	WBM Wedge Lock	3pc Double Bevel Flat	32/1.25
250	66"	101559	1912/4206	1.85/2.43	WBM Wedge Lock	3pc Double Bevel Flat	32/1.25
300	72"	101688	2291/5040	2.38/3.11	WBM Wedge Lock	3pc Double Bevel Flat	32/1.25

| SERRATED CUTTING EDGES AVAILABLE UPON REQUEST. |

# HEAVY DUTY DIRECT LINK THUMBS



Adding a Heavy Duty Direct Link Thumb to a compatible bucket or rake can dramatically increase the functionality of your excavator. Viking West Heavy Duty Direct Link Thumbs feature a simple yet robust design that delivers outstanding performance.



**FIG 7** Heavy Duty Direct Link Thumb



## KEY FEATURES



### MADE IN CANADA

Our Heavy Duty Direct Link Thumb has been designed, developed, and assembled at our facility in Burnaby, British Columbia.



### TESTING AND STRESS ANALYSIS

Heavy Duty Thumbs are expected to handle extreme loads in the toughest conditions. We have spent countless hours testing our Thumbs in extreme conditions in British Columbia to ensure that they won't let you down.



### PRODUCT SAFETY AND COMPLIANCE

Our Product Safety and Compliance engineer has completed a comprehensive risk analysis to ensure that we comply with all applicable industry standards. We have gone above and beyond wherever we can to ensure the safe operation, transportation, and servicing of our Thumbs.



### ENGINEERED WELDING

Our welding engineers have thought through every detail of welding on our Thumbs. Material selection, joint design, welding process, and quality testing have all been carefully chosen to ensure our welds will stand up to the extreme demands on the job.

### HIGH-STRENGTH ABRASION-RESISTANT STEEL

Viking West Heavy Duty Thumbs are made with AR400 grade high-tensile, abrasion-resistant steel for our heavy duty, single-piece tines to ensure exceptional durability.

### HIGH-PRESSURE CYLINDERS

Our Heavy Duty Thumb cylinders are designed and individually proof-tested to 4500PSI for use with modern excavator high-pressure hydraulic systems.

### ENGINEERED TAIL MOUNTS

The Thumb cylinder tail mounts have been designed to optimize load transfer to the excavator arm.

### INDUCTION-HARDENED BUSHINGS

Our Heavy Duty Thumbs include induction-hardened, high-strength steel replaceable bushings to ensure long-term durability and serviceability.

### PEACE OF MIND

Every Viking West Heavy Duty Thumb comes with an industry-leading 24-month warranty. If you need our support, we promise to have service parts in stock and qualified technicians available to get you back up and running.





# SPECIFICATIONS

The specifications for the Heavy Duty Direct Link Thumb are as follows:

## WEDGE LOCK QUICK CHANGE

SERIES	SKU	WIDTH (mm/in)	LENGTH (mm/in)	WEIGHT WITH CYLINDER (kg/lb)	CYLINDER PIN DIAMETER (mm/in)	PIVOT PIN DIAMETER	# OF TINES	CYLINDER PORT SIZE	TAIL MOUNT INCLUDED	REPLACEABLE BUSHINGS	HARD- SURFACING ON TINES
10	101574	330/13.0	645/25.4	38.7/85.1	20/0.8	30/1.2	2	ORB-4	No	Yes	No
25	101832	386/15.2	760/29.9	54.9/120.8	25/1.0	35/1.4	2	ORB-4	No	Yes	No
30	100257	386/15.2	760/29.9	54.9/120.8	25/1.0	35/1.4	2	ORB-4	No	Yes	No
50/60	100261	420/16.5	930/36.6	71.9/158.2	25/1.0	45/1.8	2	ORB-4	No	Yes	No



# SPECIFICATIONS (continued)

The specifications for the Heavy Duty Direct Link Thumb continued:

## WEDGE LOCK LUGGING



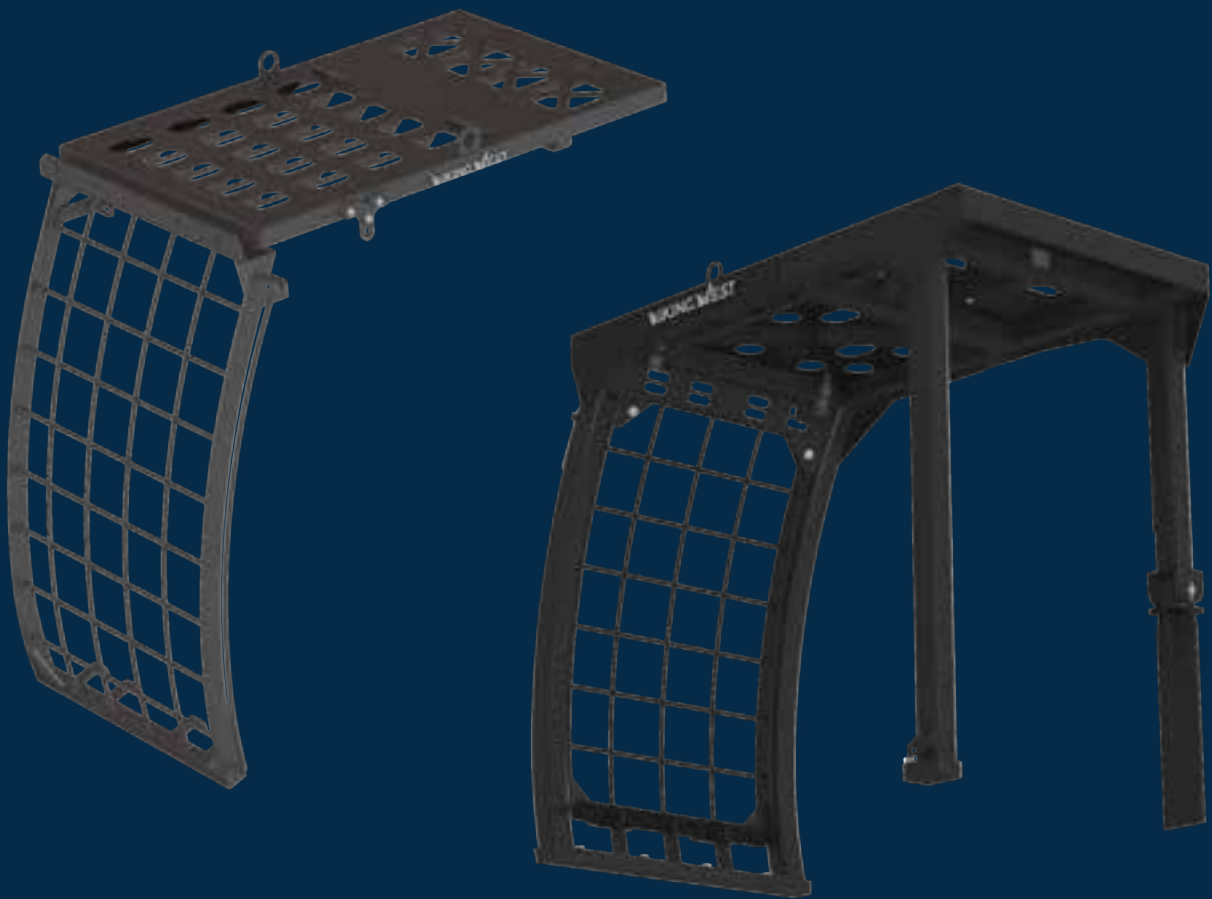
SERIES	SKU	WIDTH (mm/in)	LENGTH (mm/in)	WEIGHT WITH CYLINDER (kg/lb)	CYLINDER PIN DIAMETER (mm/in)	PIVOT PIN DIAMETER	# OF TINES	CYLINDER PORT SIZE	TAIL MOUNT INCLUDED	REPLACEABLE BUSHINGS	HARD- SURFACING ON TINES
80	100265	474/18.7	1130/44.5	145/319.0	35/1.4	50/2.0	2	ORB-8	No	Yes	No
120	100054	571/22.5	1413/55.6	293/644.6	50/2.0	65/2.6	3	ORB-12	Yes	Yes	Yes
150	101837	635/25.0	1500/59.1	350/770.0	50/2.0	80/3.1	3	ORB-12	Yes	Yes	Yes
200	100201	682/26.9	1630/64.2	460/1012.0	60/2.4	80/3.1	3	ORB-12	Yes	Yes	Yes
200	102022	734/28.9	1630/64.2	494/1086.8	60/2.4	80/3.1	2	ORB-12	Yes	Yes	Yes
250	101265	768/30.2	1787/70.4	668/1469.6	70/2.8	90/3.5	3	ORB-12	Yes	Yes	Yes
250	101980	812/32.0	1787/70.4	789/1735.8	70/2.8	90/3.5	2	ORB-12	Yes	Yes	Yes
300	101500	777/30.6	1963/77.3	815/1793.0	70/2.8	100/3.9	3	ORB-12	Yes	Yes	Yes
300	101983	833/32.8	1963/77.3	824/1812.8	70/2.8	100/3.9	2	ORB-12	Yes	Yes	Yes
400	101669	902//35.5	2136/84.1	1070/2354.0	75/3.0	110/4.3	3	ORB-12	Yes	Yes	Yes
400	102389	1021/40.2	2112/83.1	1145/2519.0	75/3.0	110/4.3	2	ORB-12	Yes	Yes	Yes



# CAB GUARDING



You require cab guards that provide additional operator protection for standard construction excavator cabs. Viking West Cab Guards are designed to give operators the peace of mind that their cabin is protected from unforeseen impacts they may encounter on challenging construction and forestry job sites.



**FIG 8** | Cab Guard FOG

**FIG 9** | Cab Guard FOPS



## KEY FEATURES



### INDUSTRY SAFETY REGULATIONS COMPLIANCE

Our Product Safety and Compliance engineer has completed a comprehensive risk analysis to ensure that we comply with all applicable industry standards. Viking West FOPS Cab Guards comply with WorkSafeBC Codes G602, G608 and SAE J231 industry standards for operator protection.



### ENGINEERED WELDING

Our welding engineers have thought through every detail of welding on our Cab Guards. Material selection, joint design, welding process, and quality testing have all been carefully chosen to ensure our welds will stand up to the extreme demands on the job.

### ESCAPE HATCH

Our Cab Guards include a large, hinged roof escape hatch.

### HINGED WINDOW GUARD

Front window guard is hinged at the bottom edge to permit easy access to the cab front window for cleaning or service.

### LIGHT PROTECTION SYSTEM

Our Cab Guards allow easy installation and on-the-job protection of auxiliary lighting systems.

### PEACE OF MIND

Every Viking West Cab Guard comes with an industry-leading 24-month warranty. If you need our support, we promise to have service parts in stock and qualified technicians available to get you back up and running.



# SPECIFICATIONS

The specifications for the FOPS Cab Guard are as follows:

## FOPS CAB GUARD

CAB COMPATIBILITY	SKU	WIDTH (mm/in)	LENGTH (mm/in)	HEIGHT (mm/in)	WEIGHT (kg/lb)	ESCAPE HATCH	HINGED WINDOW
Hitachi Z160 thru ZX470 LC Series	102169	1317/51.9	2154/85.2	1881/74.0	611/1344	Yes, air-assisted	Yes
Hitachi ZX135 and ZX245	102682	1317/51.9	1958/77.1	1881/74.0	586/1289	Yes, air-assisted	Yes

The specifications for the Bolt-on FOG Cab Guard are as follows:

## FOG CAB GUARD

CAB COMPATIBILITY	SKU	WIDTH (mm/in)	LENGTH (mm/in)	HEIGHT (mm/in)	WEIGHT (kg/lb)	ESCAPE HATCH	HINGED WINDOW
Hitachi Z160 thru ZX470 LC Series	102038	1100/43.3	1795/70.7	610/24	300/660	Yes	No
Hitachi ZX135 and ZX245	101658	1100/43.3	1795/70.7	610/24	285/627	Yes	No
Hitachi ZX75	102258	1100/43.3	1795/70.7	610.24	285/627	Yes	No



# EXCAVATOR CATWALKS



Viking West Catwalks have been designed to give owners and operators the peace of mind that their excavator is protected from unforeseen impacts they may encounter on challenging construction and forestry job sites. Viking West offers two styles of catwalks: prefabricated rolled edge and serrated edge plate kit.



**FIG 10** Prefabricated Catwalk

**FIG 11** Serrated Edge Catwalk



## WHICH STYLE IS RIGHT FOR YOU?

### PREFABRICATED ROLLED EDGE

- ▶ Unique SKU for each excavator model
- ▶ Higher purchase price
- ▶ Higher shipping cost due to shipping dimensions
- ▶ Lower installation cost
- ▶ 9" Wide walking surface
- ▶ Solid base for FOPS mounting
- ▶ Rolled edge can be slippery in rain, snow, or ice
- ▶ 2yr Warranty

### SERRATED EDGE PLATE KIT

- ▶ One SKU for ZX160 through ZX870
- ▶ Lower purchase price
- ▶ Lower shipping cost due to smaller shipping dimensions
- ▶ Higher installation cost due to additional fitting and welding
- ▶ 9" Wide walking surface
- ▶ Solid base for FOPS mounting
- ▶ Serrated outside edge provides more grip in rain, snow, or ice
- ▶ 2yr Warranty





# SPECIFICATIONS

The specifications for the Catwalk are as follows:

EXCAVATOR COMPATABILITY	SKU	LENGTH (mm/in)	WIDTH (mm/in)	HEIGHT (mm/in)	PREFABRICATED OR PLATE KIT	OUTSIDE EDGE DESIGN	WALKING SURFACE WIDTH (mm/in)	STEEL THICKNESS (mm/in)	WEIGHT (kg/lb)
ZX210	100388	3555/140	1220/48	380/15	Prefabricated	Rolled	228/9.0	6.0/0.24	272/598
ZX250/300	100390	4065/160	1220/48	380/15	Prefabricated	Rolled	228/9.0	6.0/0.24	290/638
ZX350	100391	4570/180	1220/48	380/15	Prefabricated	Rolled	228/9.0	6.0/0.24	325/715
ZX210 thru 350	101251	2160/85	510/20	380/15	Plate Kit	Serrated	228/9.0	6.0/0.24	320/704
ZX470	101251-470	2160/85	510/20	380/15	Plate Kit	Serrated	228/9.0	6.0/0.24	335/737



# BELLY PANS



Viking West Belly Pans have been designed to give owners and operators the peace of mind that their excavator is protected from unforeseen impacts they may encounter on challenging construction and forestry job sites.



**FIG 12** | *Belly Pan*



## KEY FEATURES



### TESTING AND STRESS ANALYSIS

Belly Pans are expected to handle the toughest conditions. We have spent countless hours testing our Belly Pans in extreme conditions in British Columbia to ensure that they won't let you down.

### ENGINEERED DESIGN

Viking West Belly Pans have been designed for ease of installation and durability in the most demanding work environments. The Belly Pan is held in place by rotating clamping tabs, and fasteners are protected from damage by steel bolt protectors.

### QUALITY STEEL

Our Belly Pans have been constructed from top-quality structural grade plate steel for long-term durability.

### PEACE OF MIND

Every Viking West Belly Pan comes with an industry-leading 24-month warranty. If you need our support, we promise to have service parts in stock and qualified technicians available to get you back up and running.



# SPECIFICATIONS

The specifications for the Belly Pan are as follows:

EXCAVATOR COMPATABILITY	SKU	DIAMETER (mm/in)	STEEL THICKNESS (mm/in)	WEIGHT (kg/lb)	MATERIAL	INSTALLATION METHOD
ZX75	101139	380/15.0	10/0.40	12.5/28	Structural Steel	Bolt-on
ZX120/135/169	100385	627/24.7	16/0.63	48/106	Structural Steel	Bolt-on
ZX180/200/245/250/300/345/350/380	100386	730/28.7	20/0.77	90/198	Structural Steel	Bolt-on
ZX470/670/870	100340	979/38.5	20/0.77	160/352	Structural Steel	Bolt-on



# TRACK GUARDS



Viking West Track Guards have been proven to extend undercarriage life by preventing tipping and snaking of tracks in rough ground which significantly reduces wear on the rollers and chain.

## KEY FEATURES



### ENGINEERED WELDING

Our welding engineers have thought through every detail of welding on our Track Guards. Material selection, joint design, welding process, and quality testing have all been carefully chosen to ensure our welds will stand up to the extreme demands on the job.

### QUALITY STEEL

Our Track Guards have been fabricated from top-quality structural grade plate steel for long-term durability.

### ENGINEERED DESIGN

Viking West Track Guards have been designed for ease of installation and durability in the most demanding work environments.

### PEACE OF MIND

Every Viking West Track Guard comes with an industry-leading 24-month warranty. If you need our support, we promise to have service parts in stock and qualified technicians available to get you back up and running.



**FIG 13** | Track Guard





# SPECIFICATIONS

The specifications for the Track Guard are as follows:

EXCAVATOR COMPATABILITY	SKU	WIDTH (mm/in)	LENGTH (mm/in)	HEIGHT (mm/in)	WEIGHT (kg/lb)	MATERIAL	INSTALLATION METHOD
ZX120/135	8108878VW	313/12.3	320/12.6	149/5.9	13.5/30	Structural Steel	Bolt-on
ZX160/180/200/210/ 225/240/245/250	8097015VW	370/14.6	398/15.7	172/6.8	21.3/46.9	Structural Steel	Bolt-on
EX200LC, ZX200LC/ 225USLC/230LC	8059049VW	370/14.6	402/15.8	193/7.6	21.9/50.4	Structural Steel	Bolt-on
EX300LC, ZX270LC/330LC	8049578VW	435/17.1	442/17.4	186/7.3	31.9/70.2	Structural Steel	Bolt-on
ZX270/290/300/ 345/350/380	FYA40015554VW	435/17.1	440/17.3	211/8.3	37.2/81.8	Structural Steel	Bolt-on
ZX470	8100798VW	480/18.9	480/18.9	228/9.0	39.2/86.2	Structural Steel	Bolt-on





**VIKING WEST**